



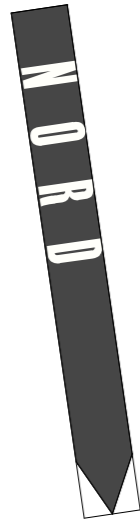
BESTAND

ABRUCH

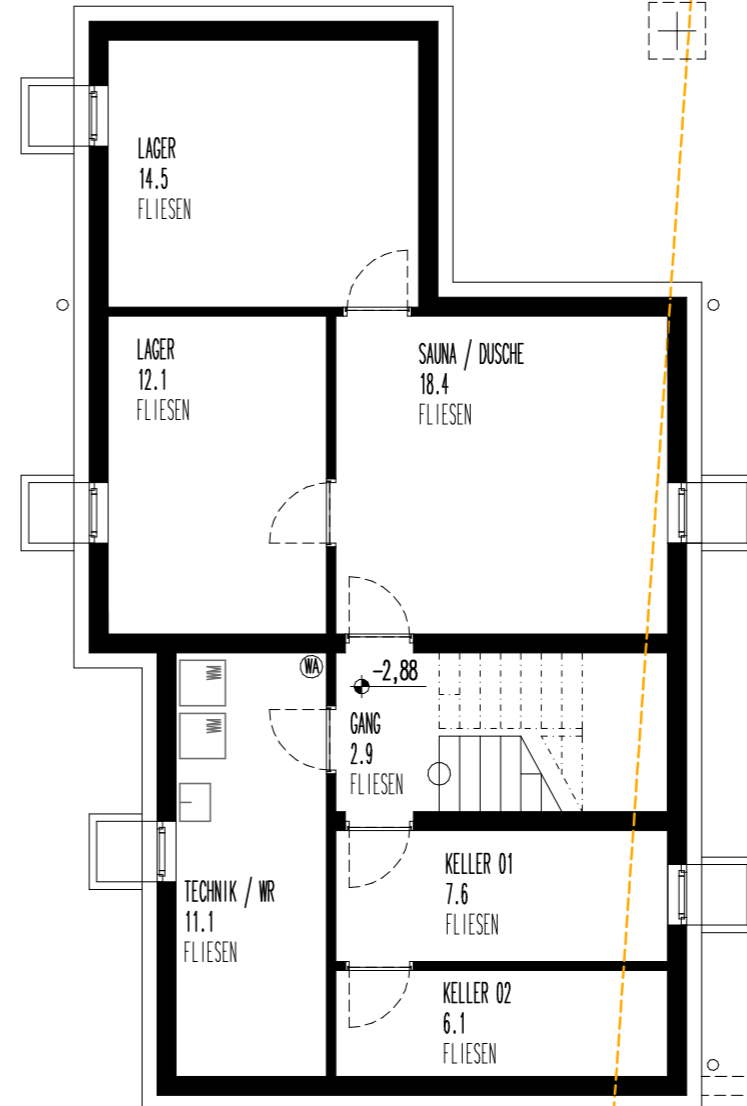
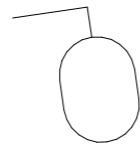
NEU

28.09.2015

ENTWURF



207/5



Punktfundament lt. Statik

KANAL UMLEGUNG VORSCHLAG BÜRO EITLER

KANAL BESTAND

BESTAND

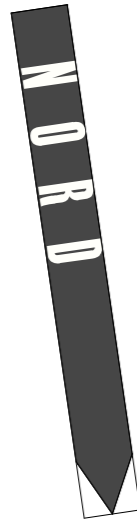
ABBRUCH

Schacht 54z5L
+0.59
-2.46

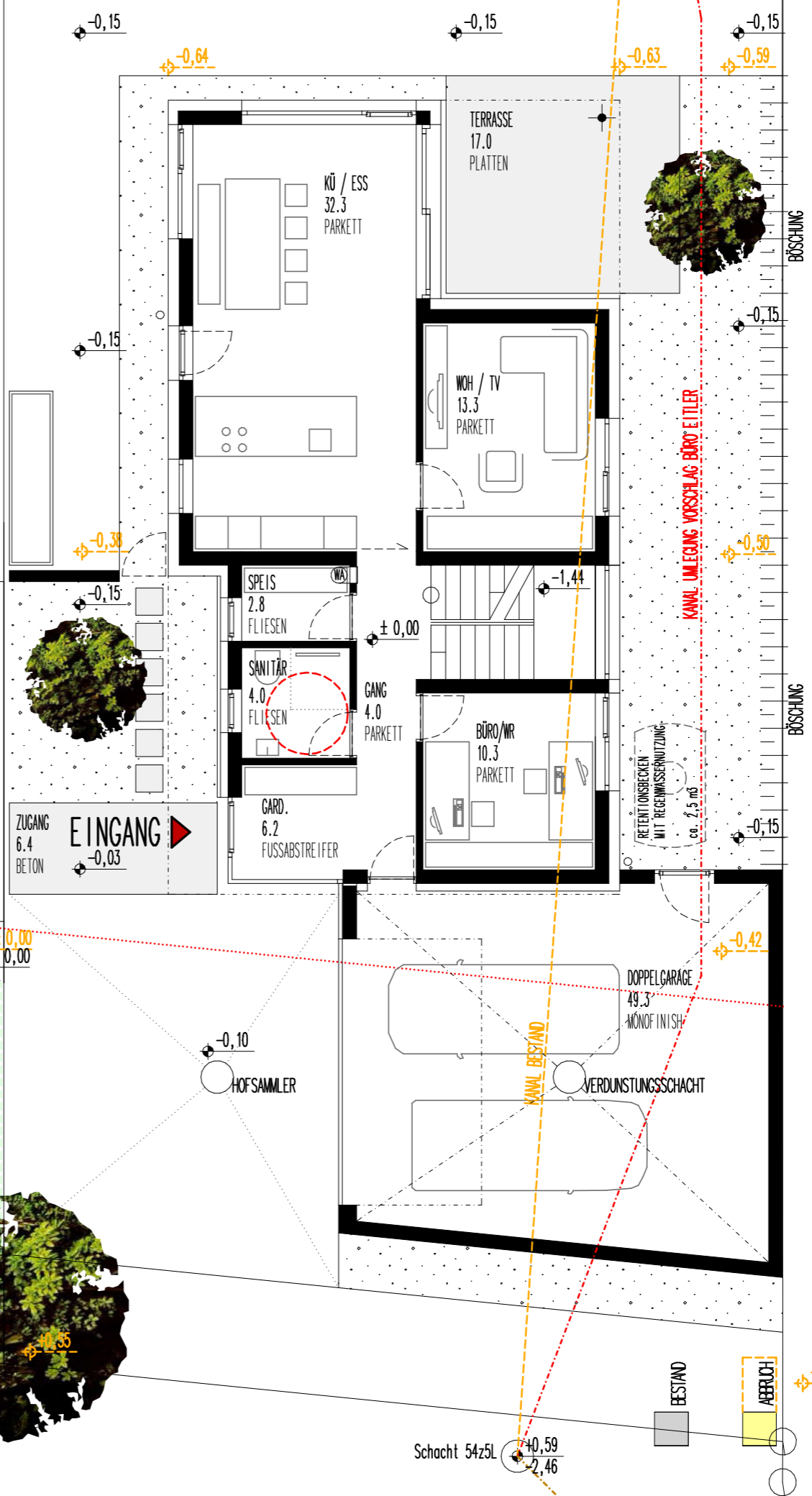
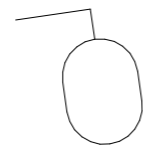
UNTERGESCHOSS 1-100

28.09.2015

ENTWURF



207/5

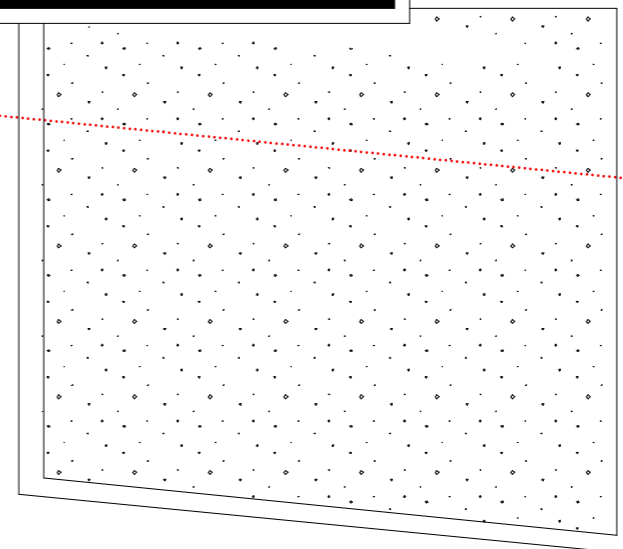
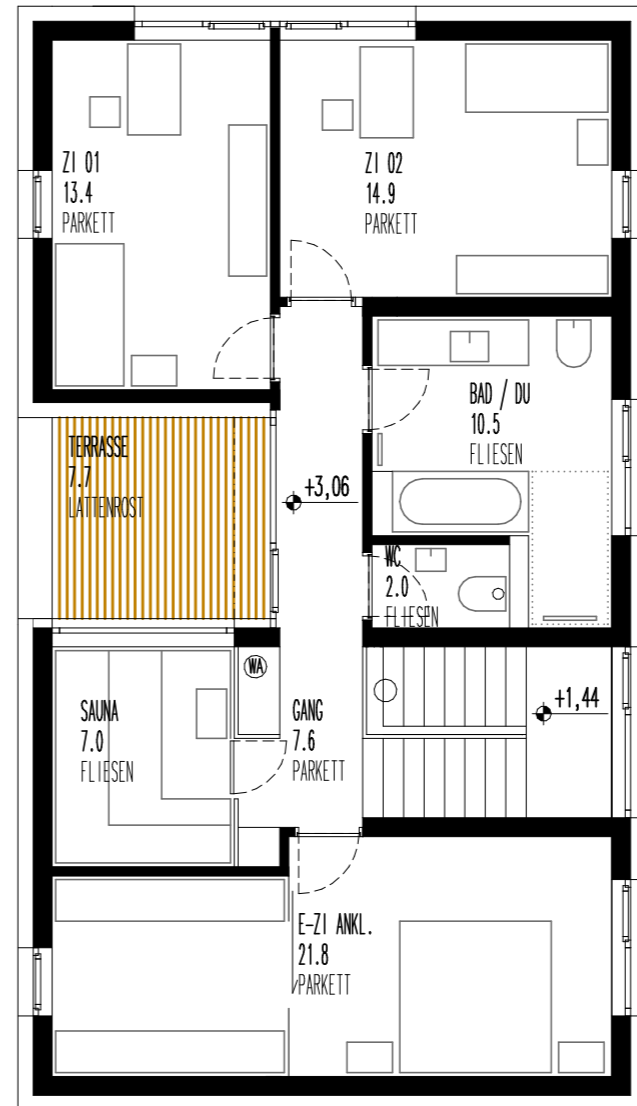
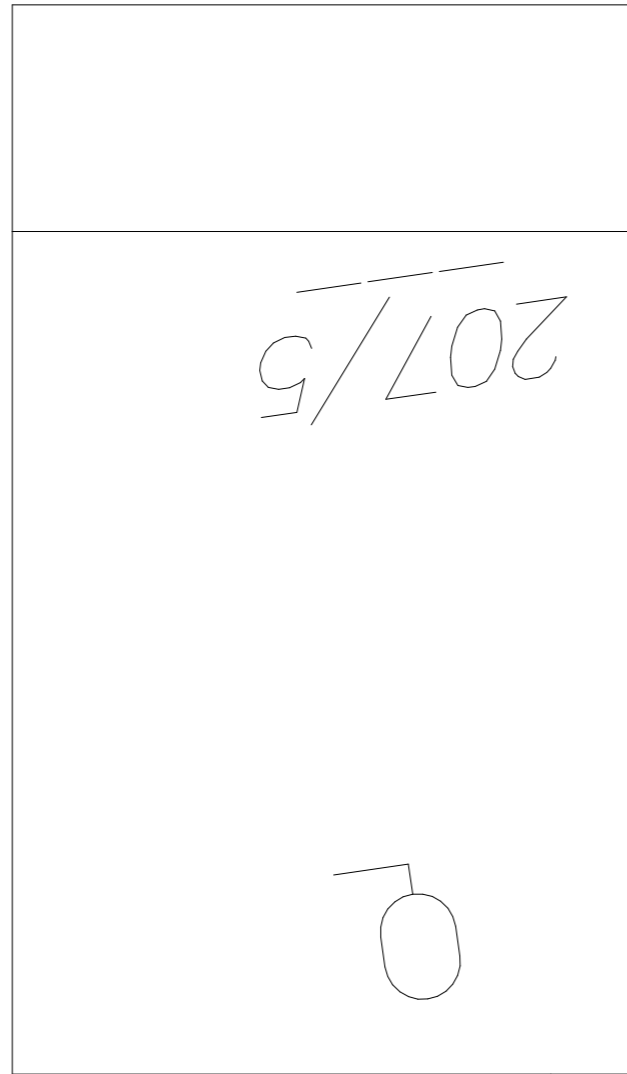
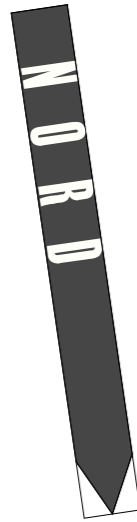


113
498⁵
< GEH UND FAHRTRECHT >
201⁵

ERDGESCHOSS 1-100

28.09.2015

ENTWURF

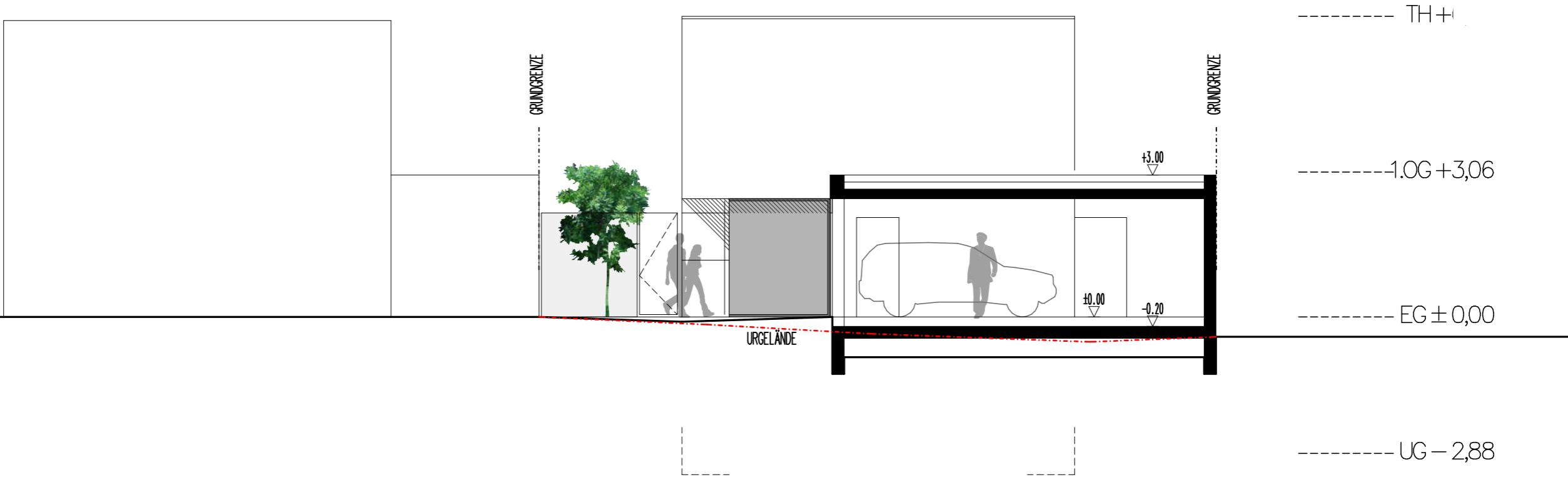


1. OBERGESCHOSS 1-100



28.09.2015

ENTWURF



ANSICHT NORD 1-100

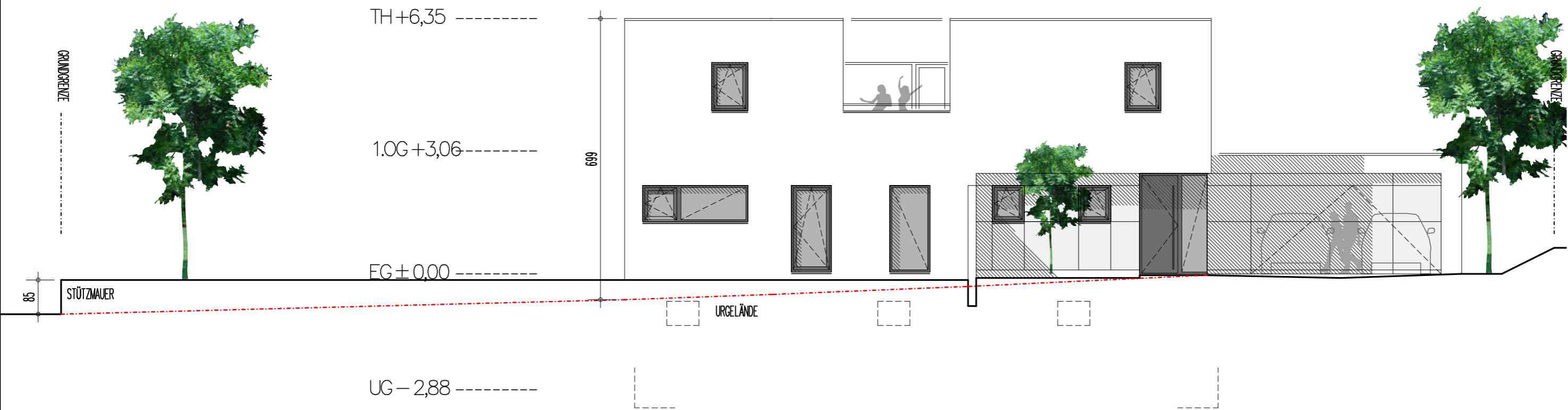
BESTAND

ABBRUCH

NEU

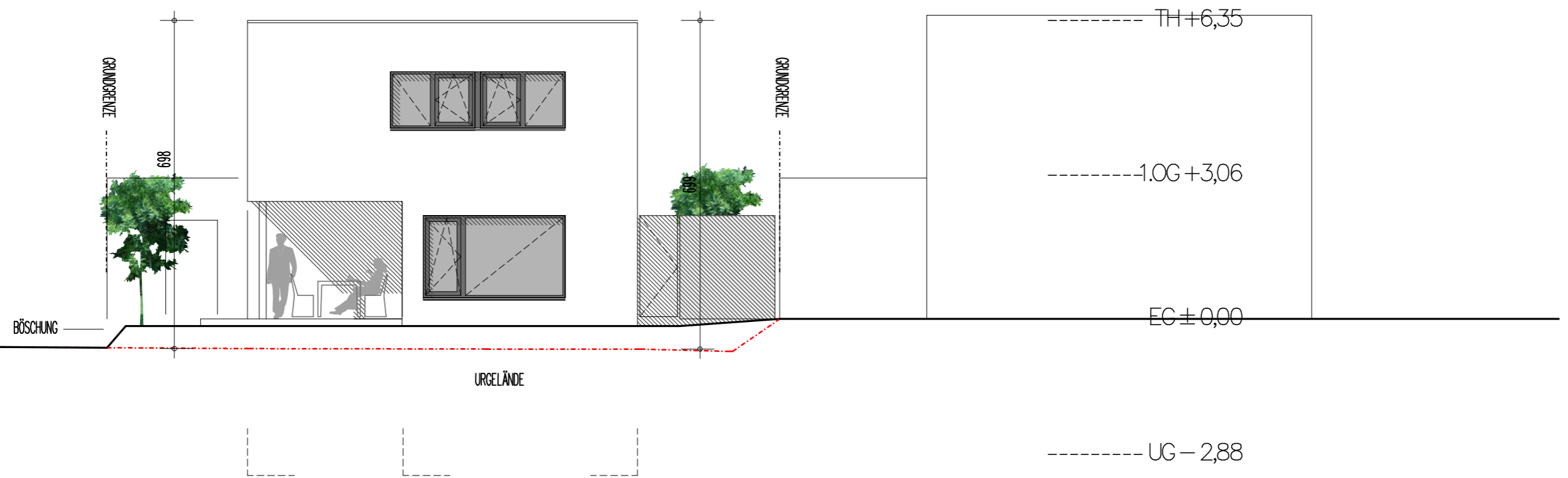
28.09.2015

ENTWURF



ANSICHT OST 1-100

ENTWURF



ANSICHT SÜD 1-100

BESTAND

ABBRUCH

NEU
28.09.2015

ENTWURF



ANSICHT WEST 1-100

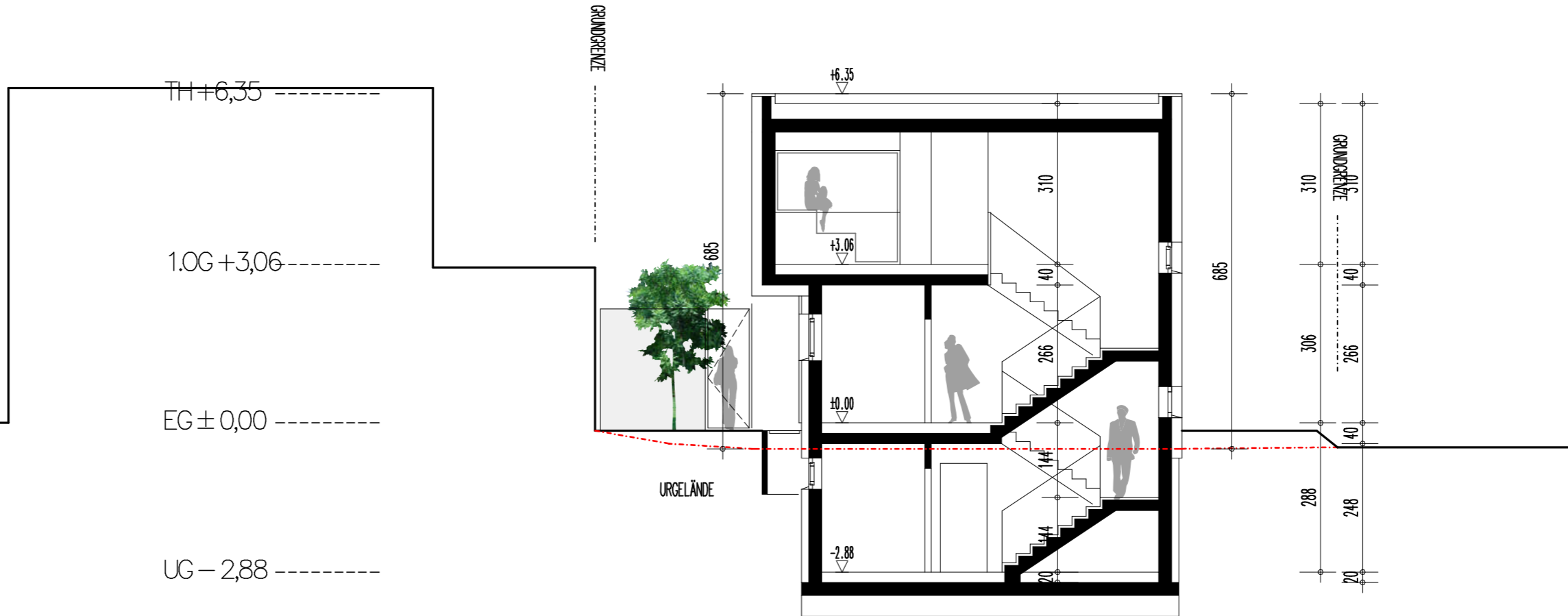
BEISTAND

ABBRUCH

NEU

28.09.2015

ENTWURF



SCHNITT 1 1-100

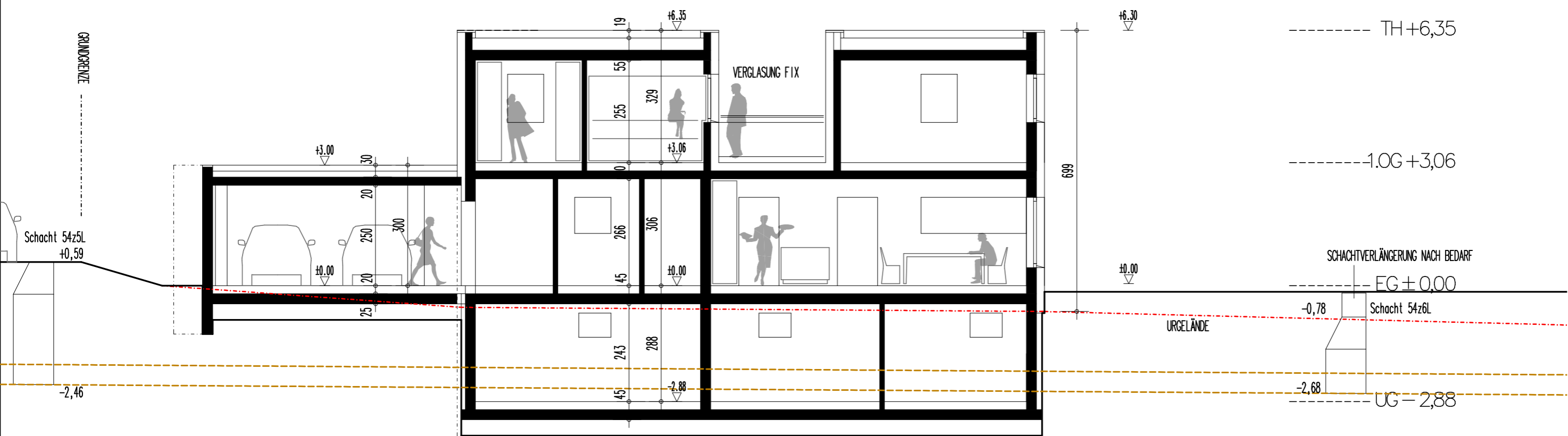
BESTAND

ABBRUCH

NEU

28.09.2015

ENTWURF



SCHNITT 2 1-100