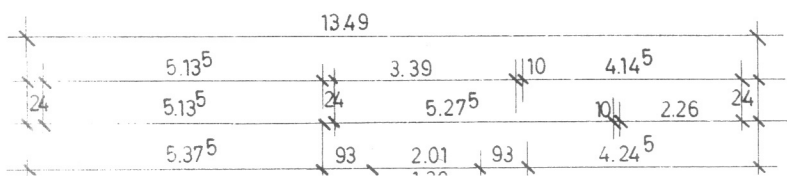
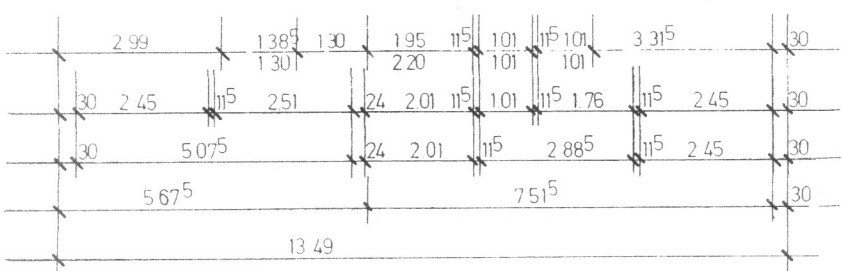
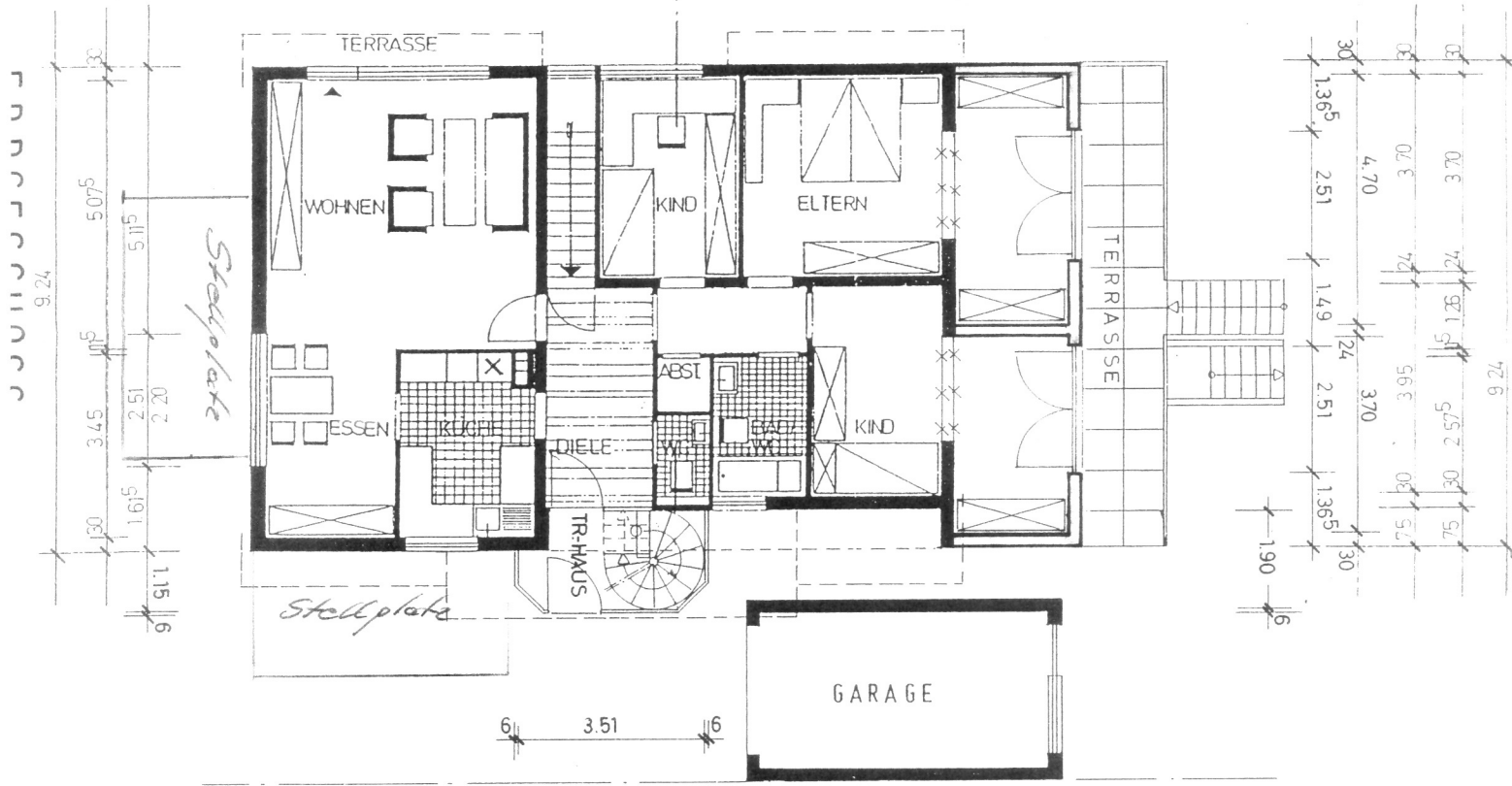
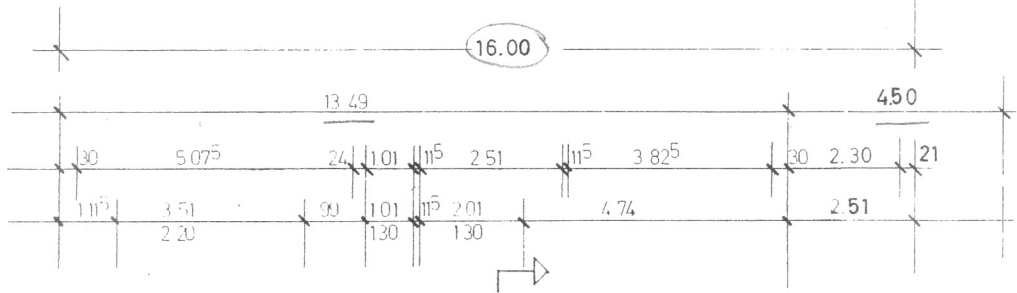
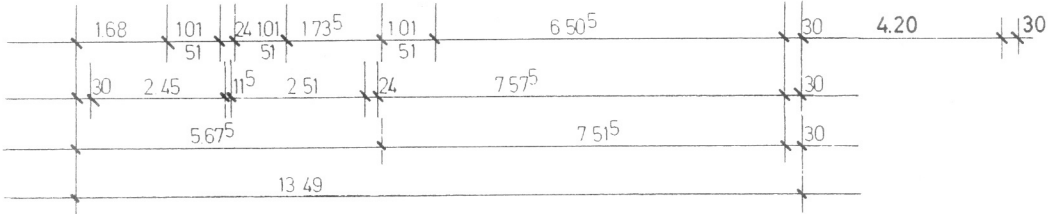
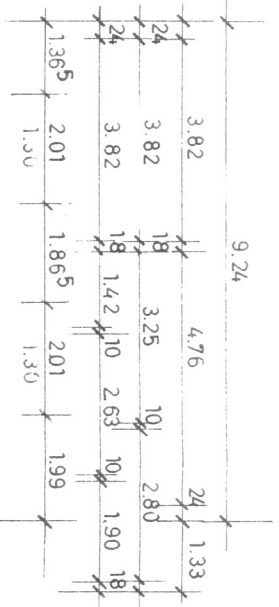
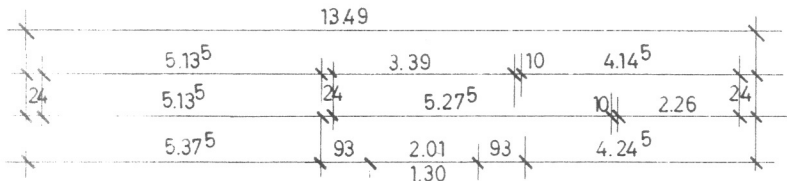
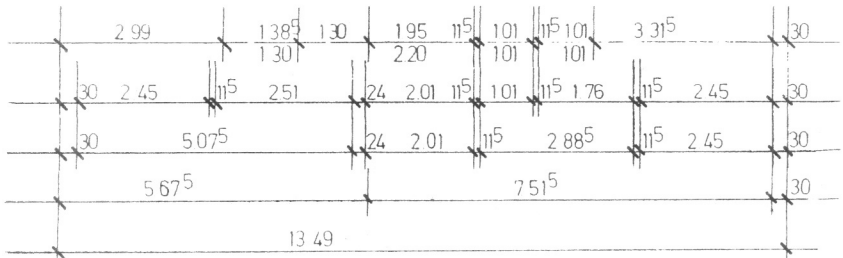


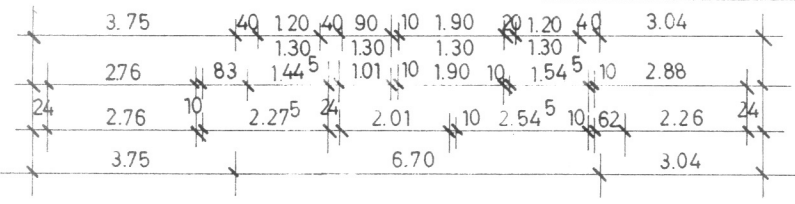
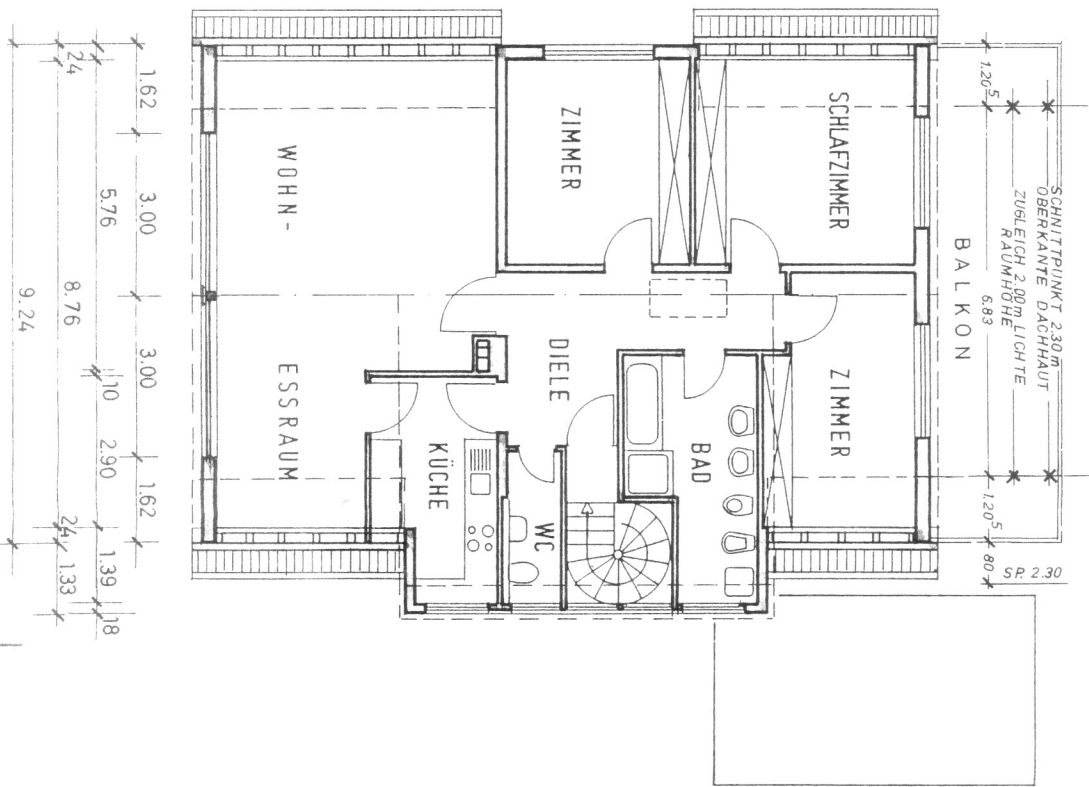


Plan  
 nicht verb.  
 17. Stufe  
 14.12.93





D A R F S T E L L U N G



Gem. § 64 Abs. 2 BauO NRW

Gebühr zur Baueingabeung Nr. 1/19  
 Der Stellvertreter der Stadt Mettmann  
 — Ulfrike Bauaufsichtshände —

geprüft Mettmann, den 03. Aug. 19C  
 im Auftrag

BAUVORHABEN:  
 Z W E I F A M I L I E N H A U S  
 P O M M E R N S T R A S S E 1 5 4 0 2 0 M E T T M A I

B A U H E R R:  
 H E R R P E T E R S C H U L Z  
 S A A R S T R A S S E 4 4 0 2 0 M E T T M A I

BAUABSCHNITT:  
 A N T R A G A U F G E N E H M I G U N G Z I  
 A U F S T O C K U N G + E R R I C H T U N G E I N  
 2. W O H N U N G S E I N H E I T

BLATTINHALT:  
 G R U N D R I S S E  
 K E L L E R - , E R D - + D A C H G E S C H O

ENTWURFSVERFASSER:

W O L F G A N G K L Ö S E L A R C H I T E K T A K I  
 L E I P Z I G E R S T R . 1 6 4 0 2 0 M E T T M A I  
 T E L E F O N 0 2 1 0 4 / 7 0 6 ( )  
 T E L E F A X 0 2 1 0 4 / 7 1 1 1

M A S S T A B 1 : 1 0 0 D A T U M 7 . M A I 1 9

P R O J E K T - / B L A T T - N R . : 9 9 -

B L A T T G R Ö S S E : 9 0 x

U N T E R S C H R I F T E N :

D E R B A U H E R R :

D E R A R C H I T E K T

