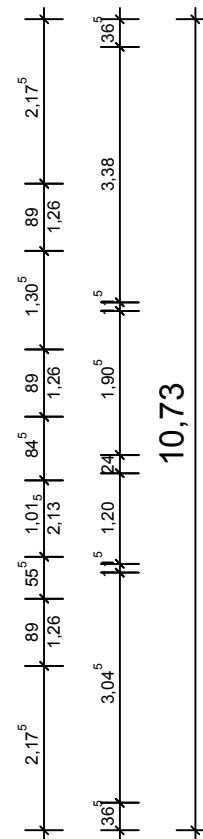
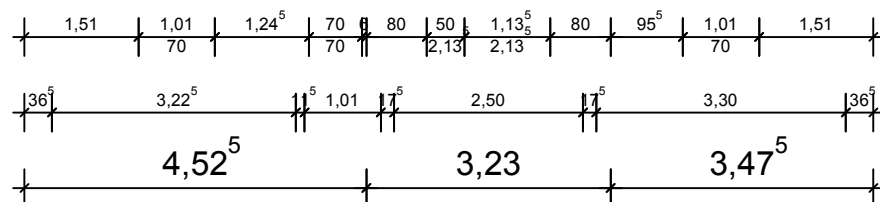
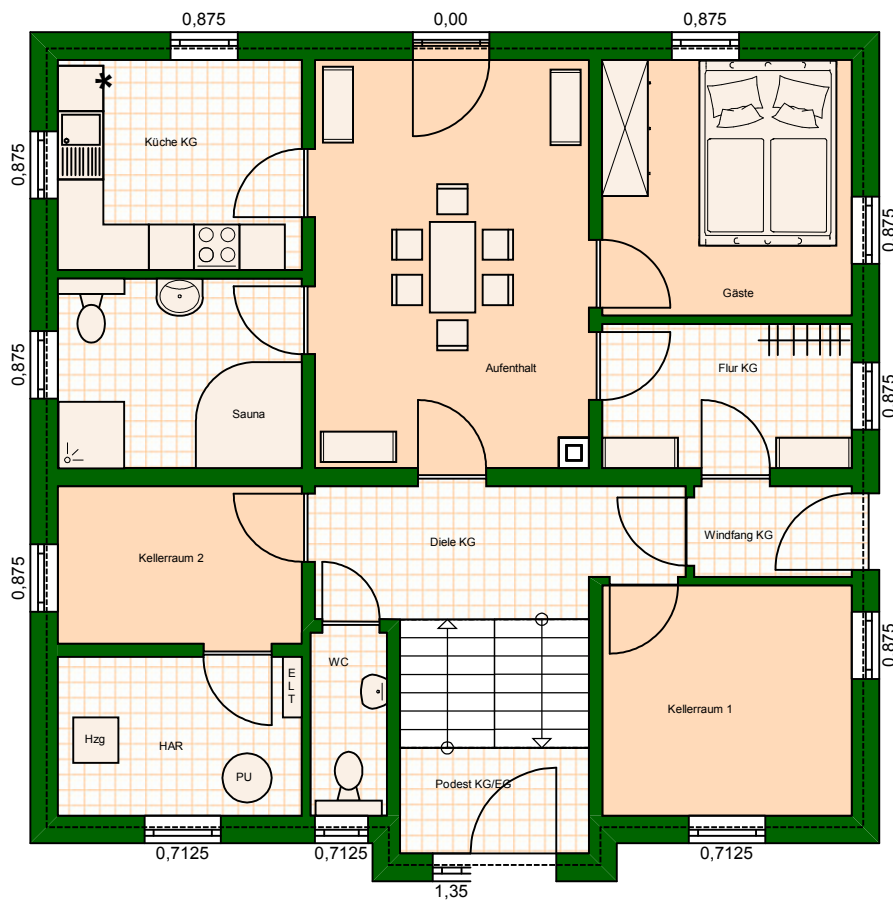
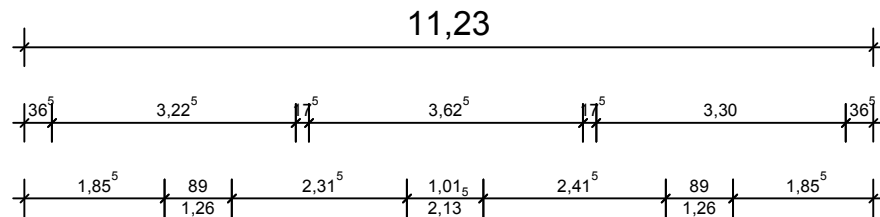


11,23



# Kellerebene

Küche KG 8,99 m<sup>2</sup> Aufenthalt 20,09 m<sup>2</sup>

Gäste 11,18 m<sup>2</sup> Flur KG 6,40 m<sup>2</sup>

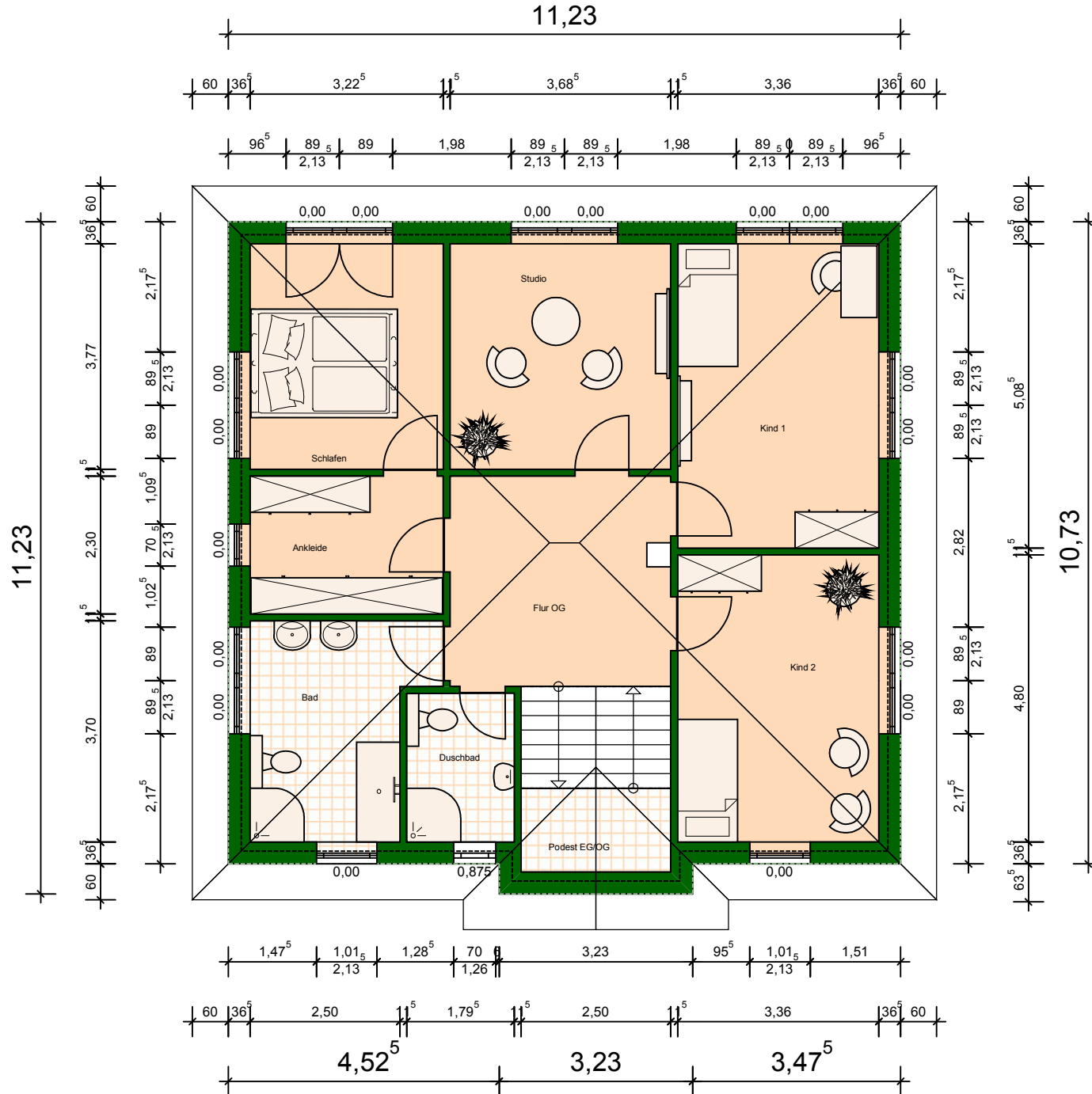
Windfang KG 2,91 m<sup>2</sup> Kellerraum 1 10,05 m<sup>2</sup>

Podest KG/EG 3,50 m<sup>2</sup> WC KG 2,52 m<sup>2</sup>

HAR 6,80 m<sup>2</sup> Kellerraum 2 6,84 m<sup>2</sup>

Bad KG 8,11 m<sup>2</sup> Diele KG 8,21 m<sup>2</sup>





# Schlafebene

Schlafen  
12,96 m²

Studio  
14,30 m²

Kind 1  
17,89 m²

Kind 2  
16,75 m²

Podest EG/OG  
3,50 m²

Duschbad  
4,46 m²

Bad  
10,67 m²

Ankleide  
7,67 m²

Flur OG  
13,32 m²