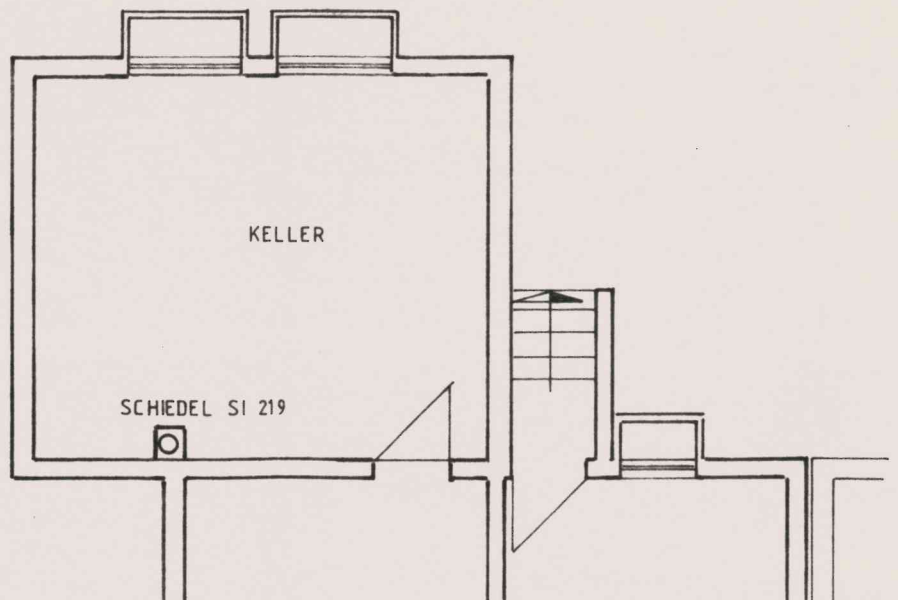
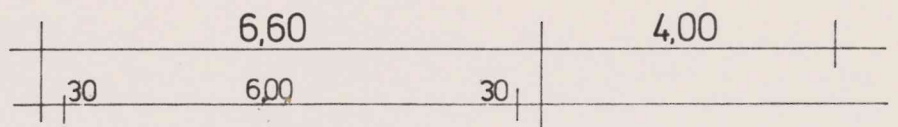
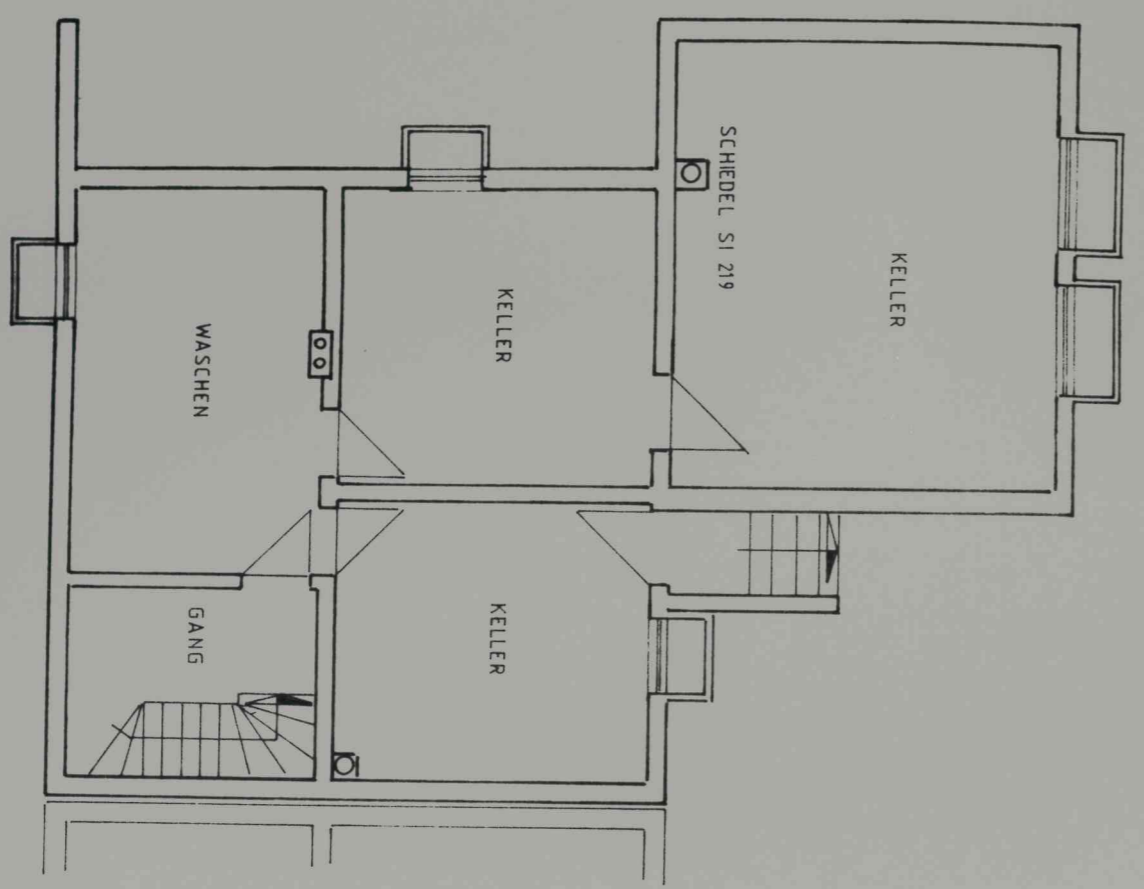


NORD-OST



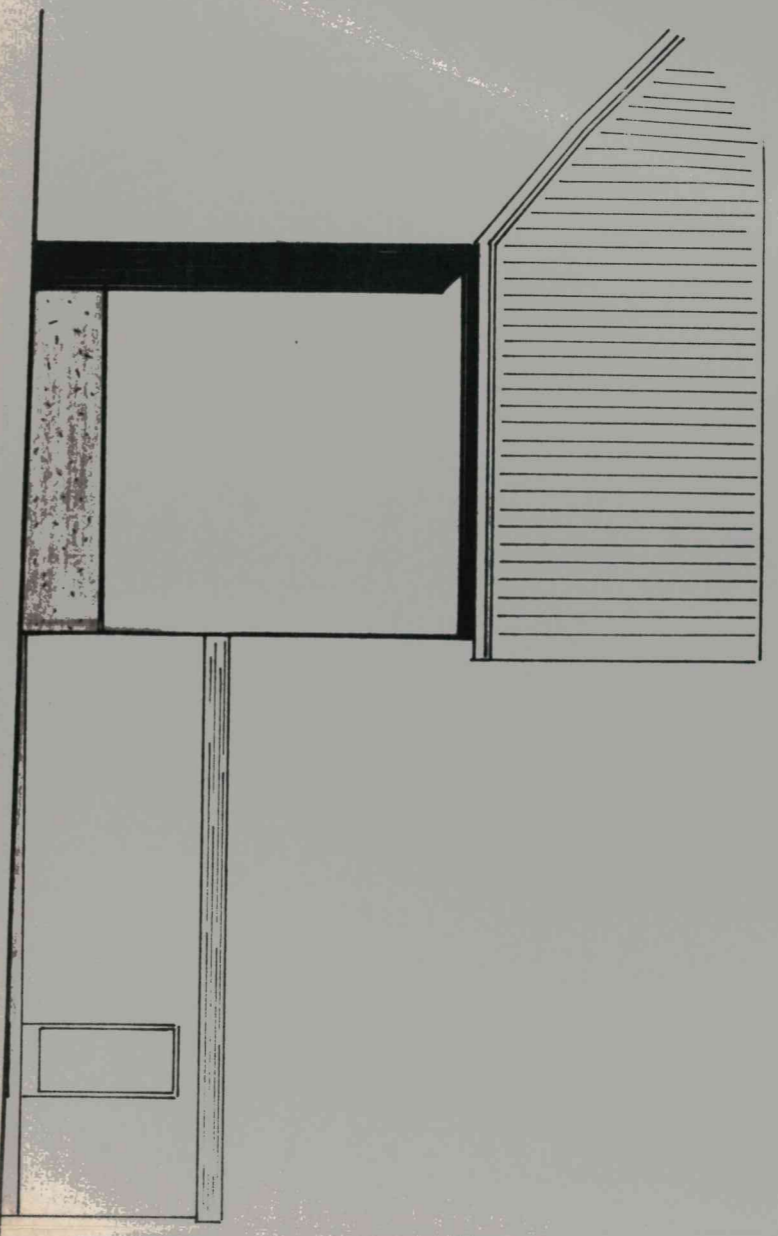
30

30 7.60 30



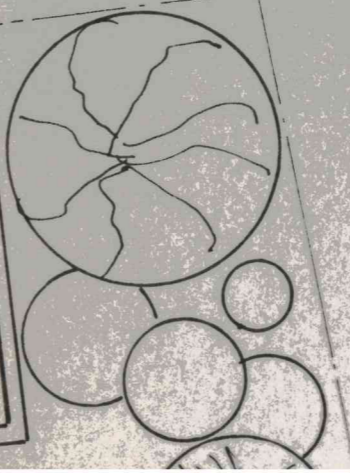
30 6.60 30 4.00

NORD-OST



8.20 5.00 30 5.30

24 8.50 5.42 175 2.425 24



30 7.60 30

2.00 30 8.50 30



8,20 5,30

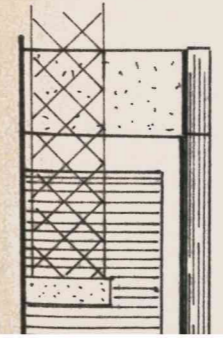
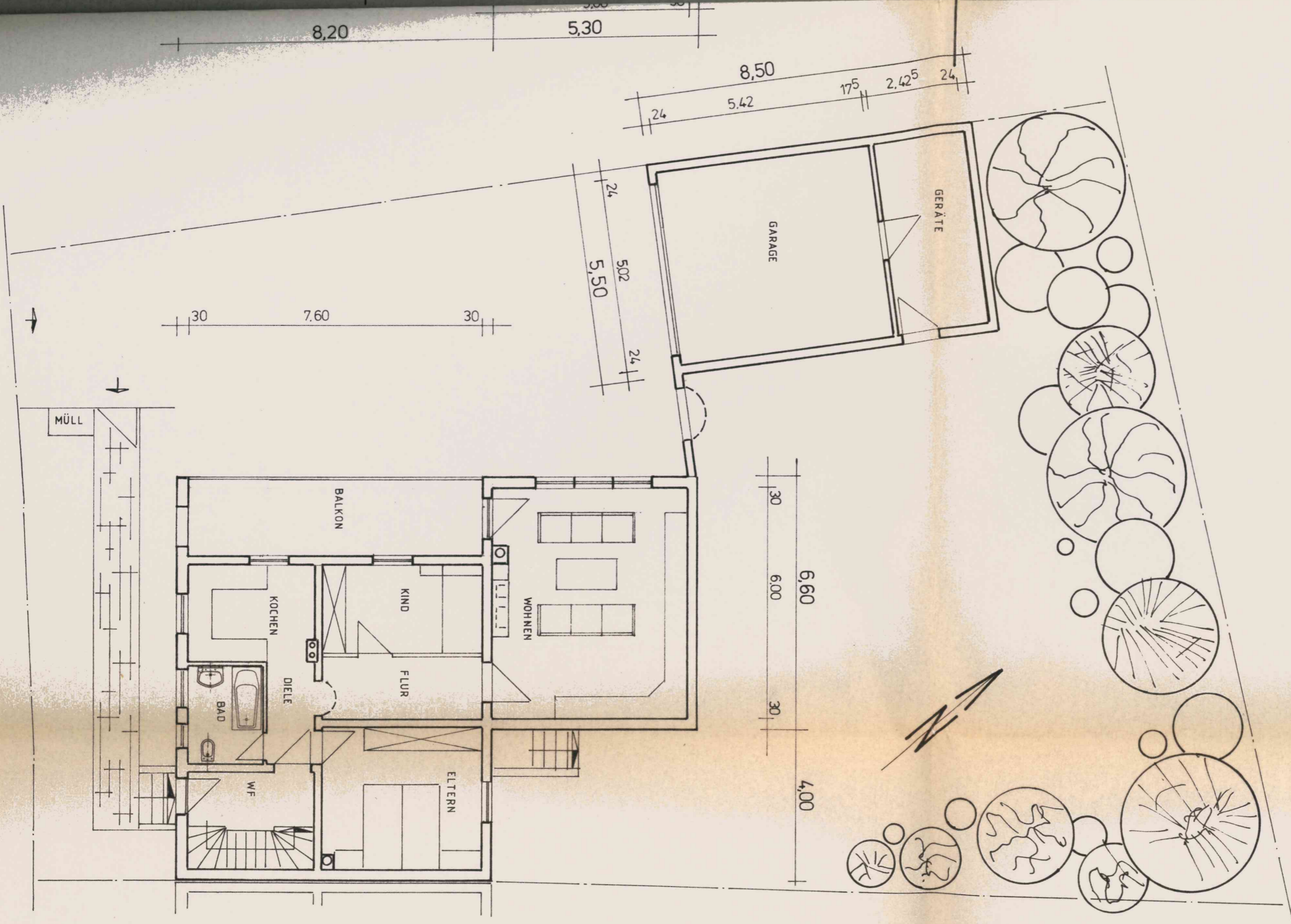
8,50 5,42 175 2,425 24

24 5,50 5,02 24

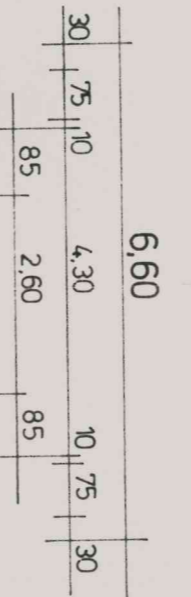
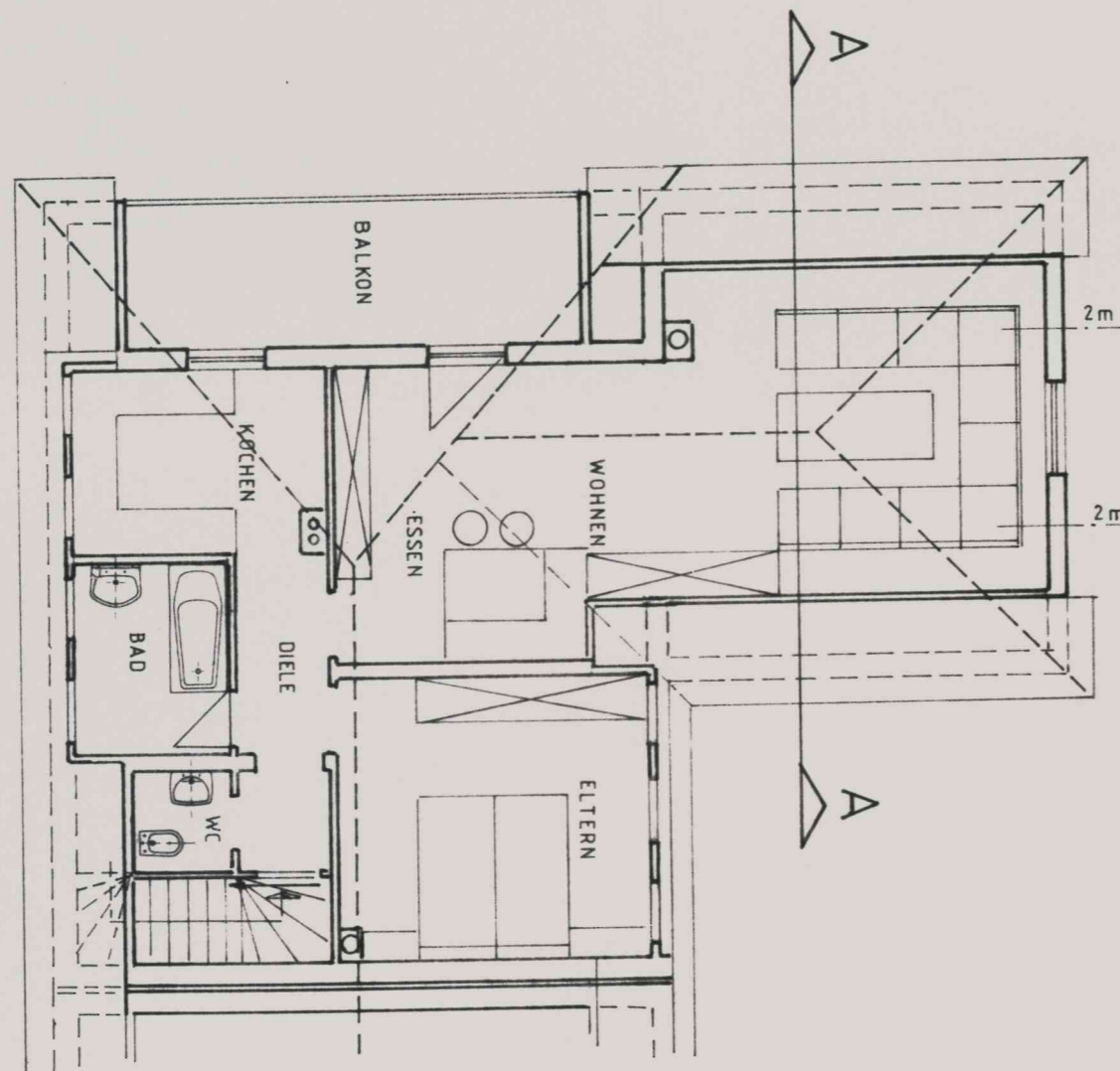
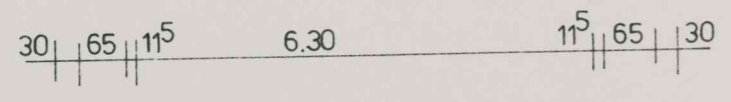
30 7,60 30

30 6,60 30 4,00

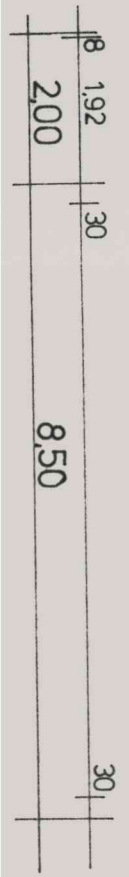
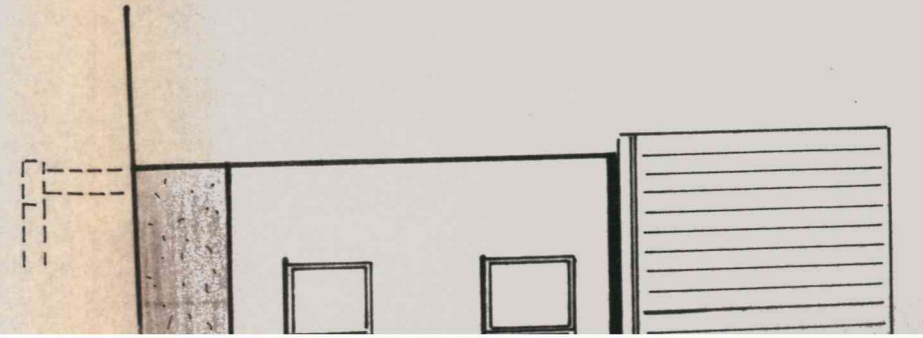
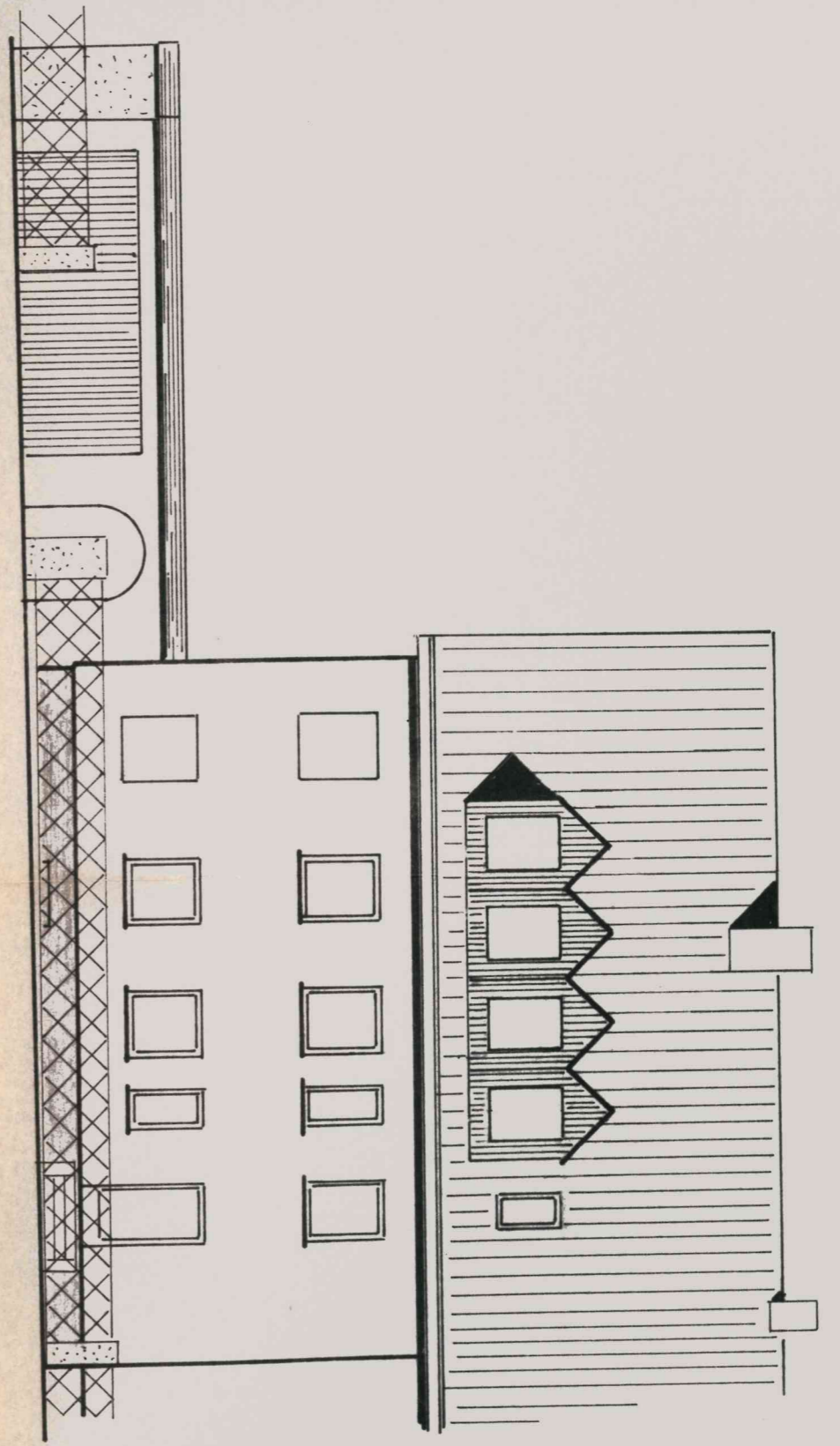
8,20 5,30 5,00 30

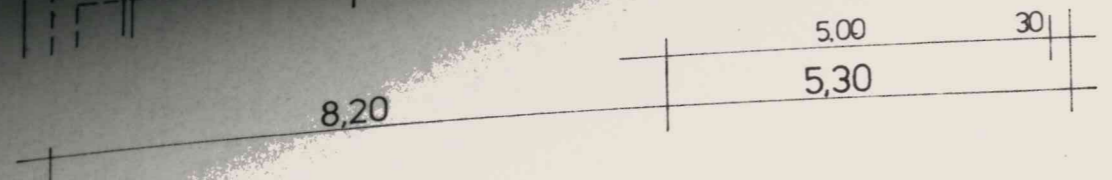


18 192 30 301



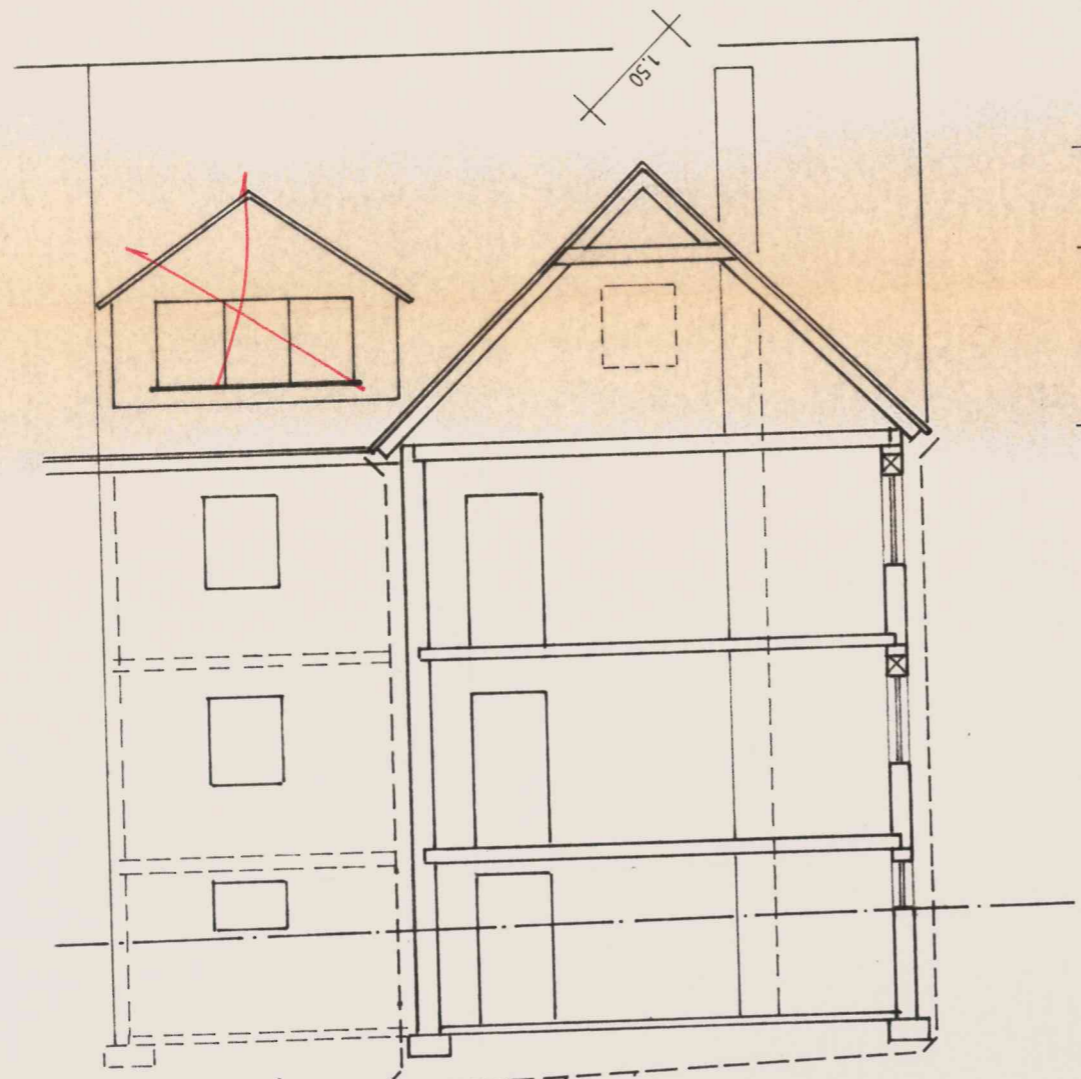
SÜD -



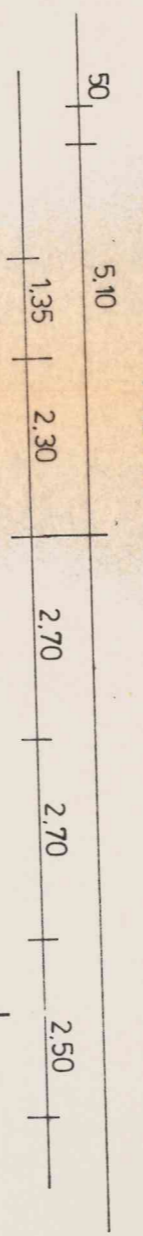


ZUM BEST. KANAL

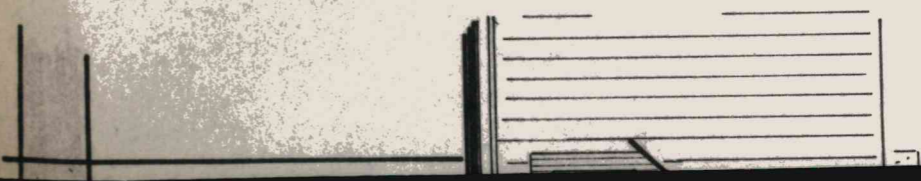
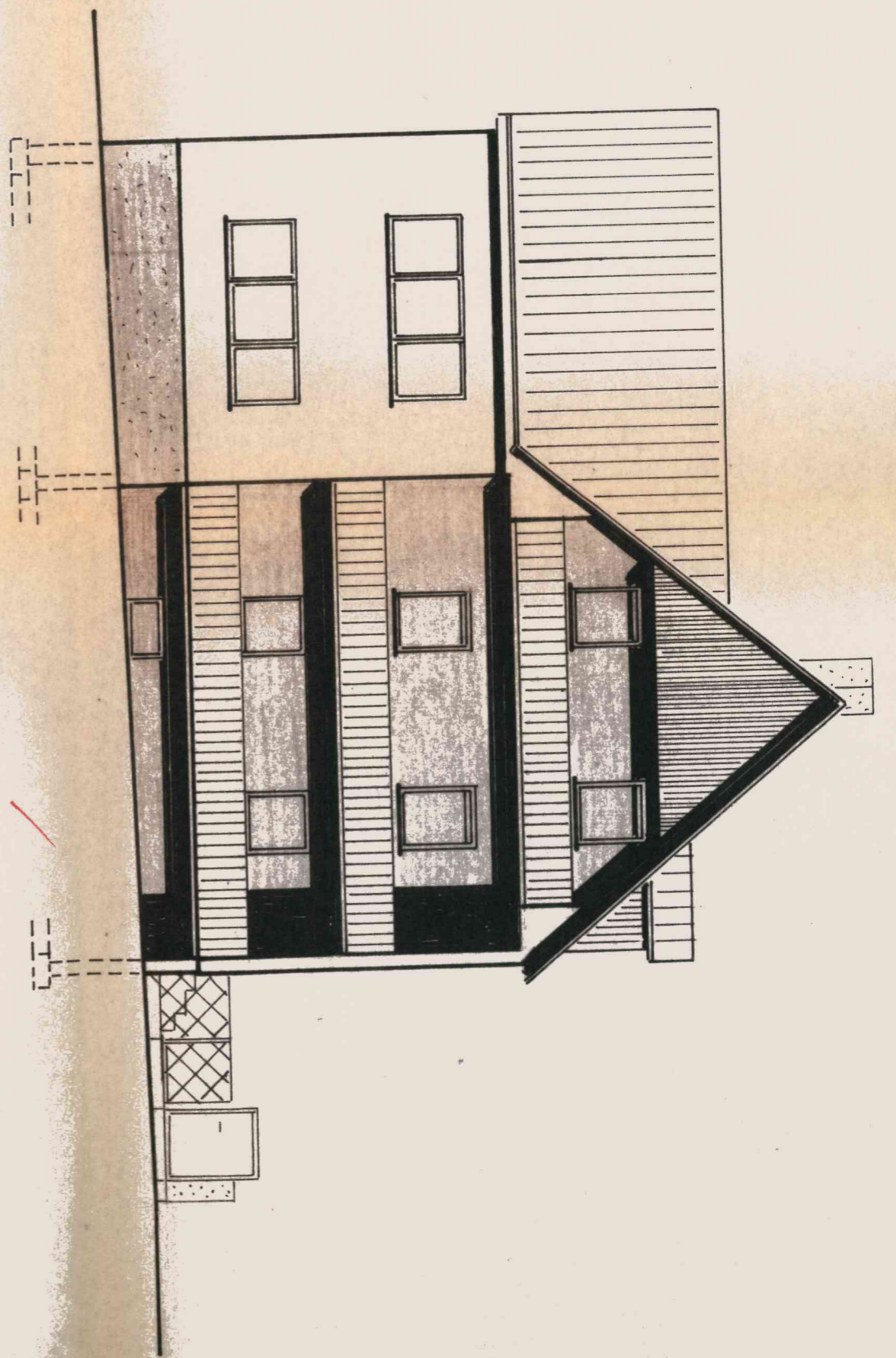
*1 Decke  
# 30  
(Feuertrennwand)*

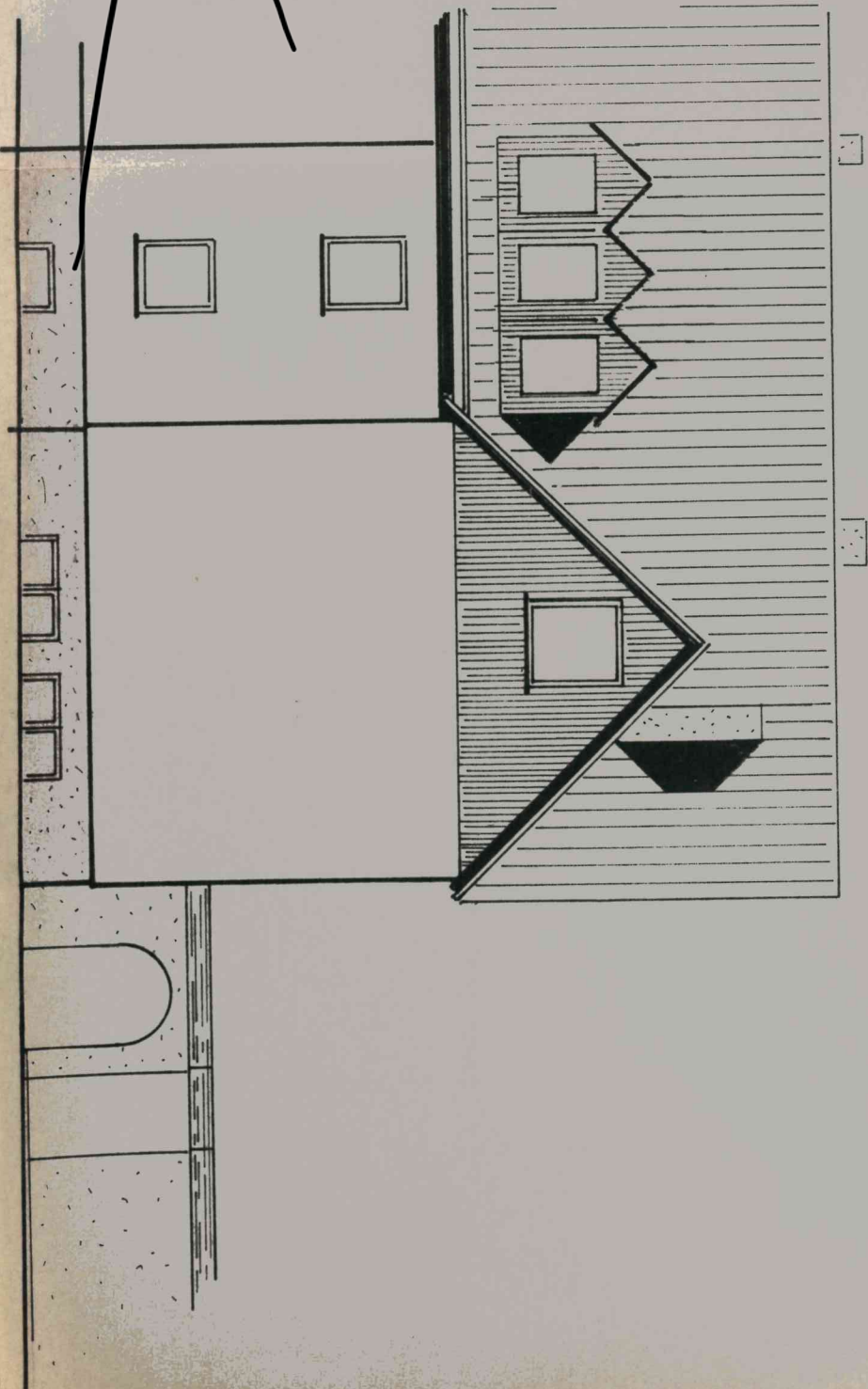


ZUM BEST. KANAL

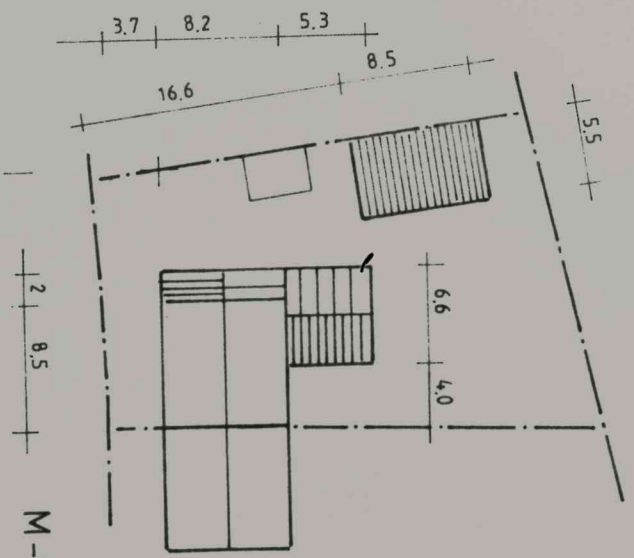


NORD - WEST





SÜD-OST



M-1:500

ZUM BEST. KANAL

NACHBARN



BAUANSICHTLICH  
GEBAUDET

*Kaywin*  
LÖSUNG

761184

TECHNISCHER ZEICHNER

ARCHITECT

DEUTSCHLAND

LANDRATSAMT

BERGAMO-VERSTÄDTER

DEUTSCHLAND

GEMEINDE  
FLUR NR

HERZOGENAUVRACH  
1595-4

DIENSTVERMERKE