

Technical drawing of a house elevation. The drawing shows a house with a chimney, two windows, and a door. The roof is labeled with a slope of 3.46%. The door is labeled 'EG' and 'CEILING'. The floor is labeled 'FLOOR'. The foundation is labeled 'FOUNDATION'. The drawing includes various dimensions and labels for construction elements like 'EG', 'CEILING', 'FLOOR', and 'FOUNDATION'. A dashed line indicates a roof slope of 3.46%.

M 1:100

CALLE  
Elev. Calzada +7.87

Elev. Calzada +0.98

Elev. Calzada -0.62

**M 1:100**

Architectural floor plan of a two-story house. The plan includes the following rooms and dimensions:

- KNO 1** (Bedroom): 12.9 m²
- KNO 2** (Bedroom): 8.8 m²
- BAD** (Bathroom): 9.7 m²
- KÜCHE** (Kitchen): 6.0 m²
- ESSTISCH** (Dining Area): 6.0 m²
- ELEKTRON** (Living Area): 6.0 m²
- DIELE** (Hallway): 6.0 m²
- Balkon** (Balcony): 6.0 m²

The plan also shows a staircase, a bathroom, and a kitchen. Dimensions are provided for the overall footprint, room areas, and individual room dimensions.

M 1:100

best. Gelände

best. Gelände in der Straße

Giebel

best. Gelände

Stützmauer

**ERDGESCHOSS**  
M 1:100

best. Gelände -2.67

best. Gelände 2.90

best. Gelände +0.72

best. Gelände -0.47

best. Gelände 0.88

WOHNEN 200.0 m²

ESSEN 32.0 m²

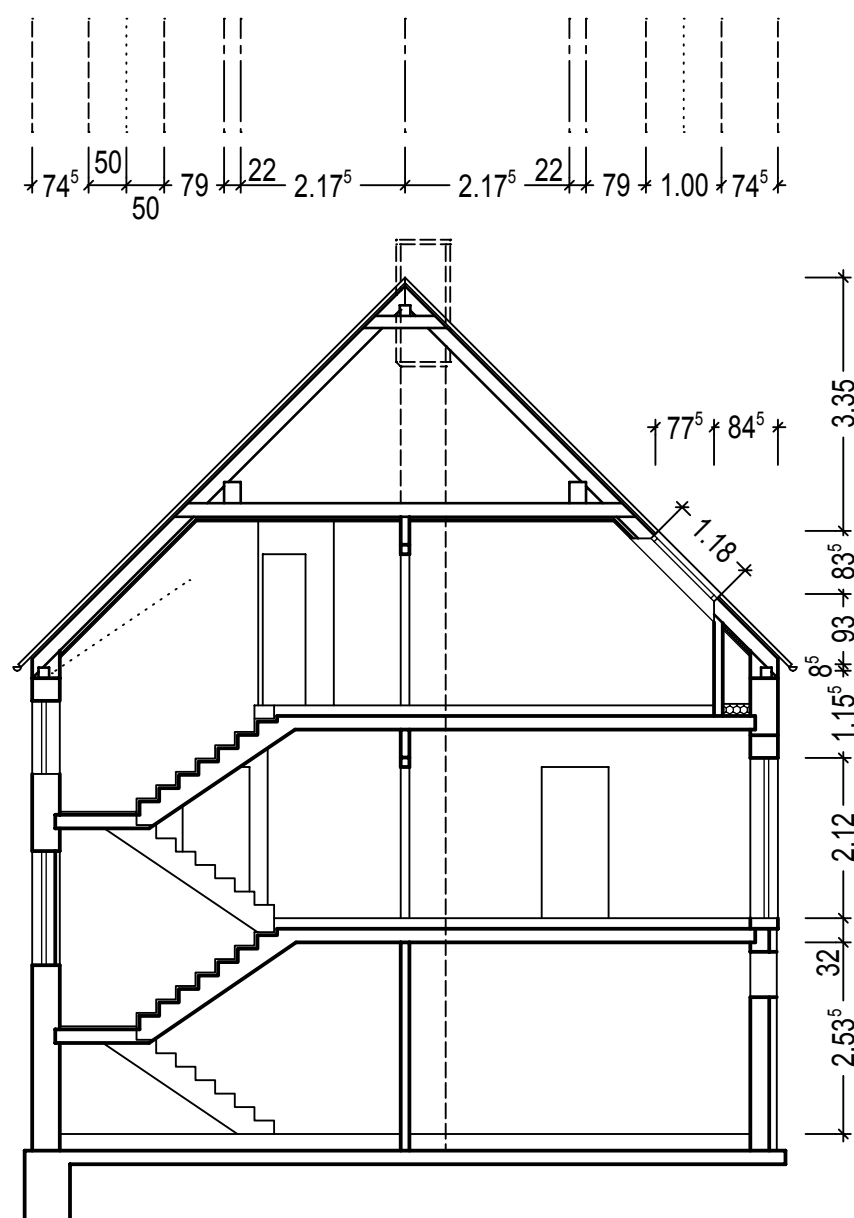
KÜCHE 30.0 m²

BAD 10.0 m²

ABST. 50.0 m²

CARPORT 40.0 m²

37/1

[illegible]

# NEUBAU EINES EINFAMILIEN WOHNHAUSES MIT DOPPELGARAGE