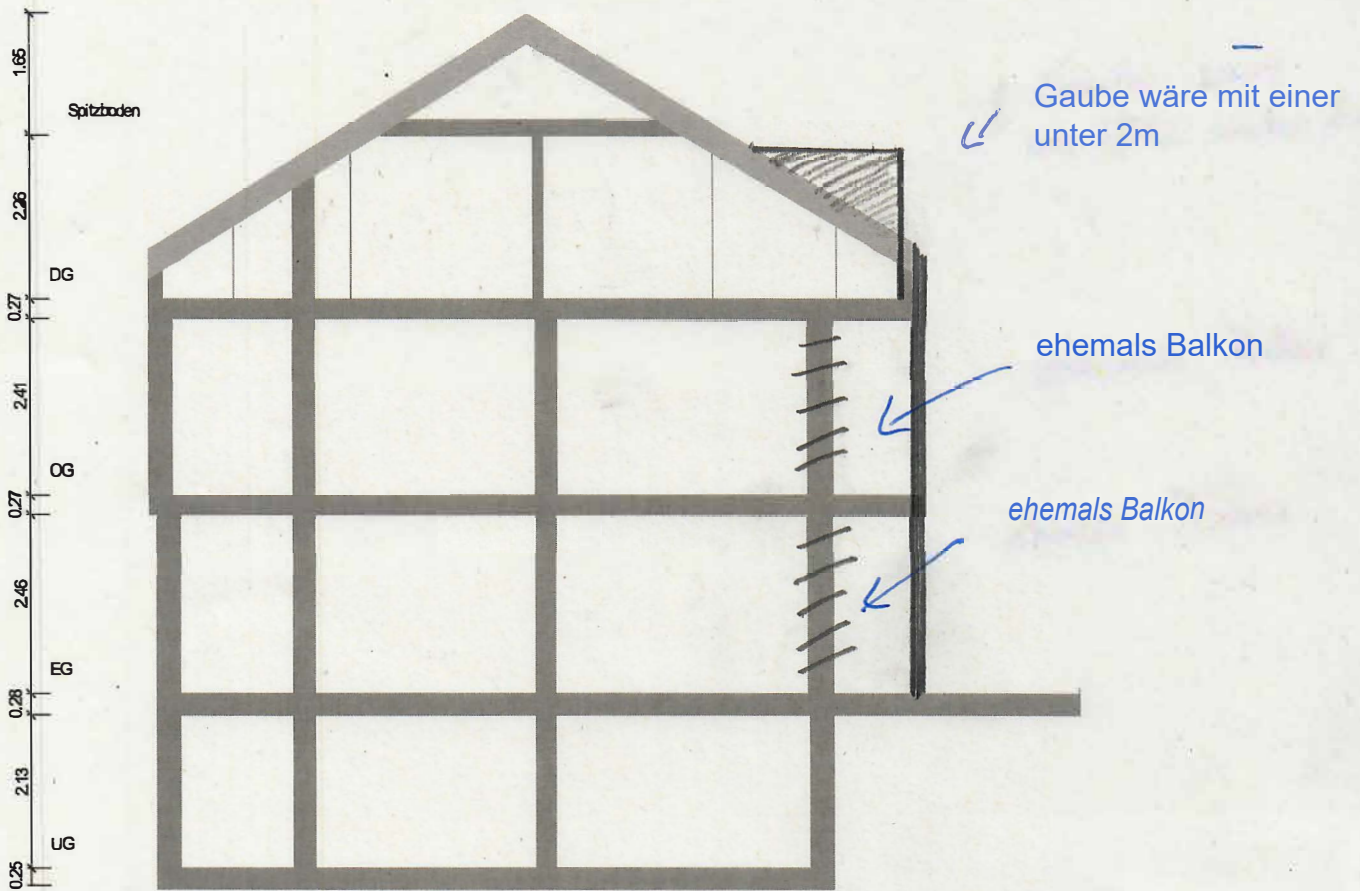


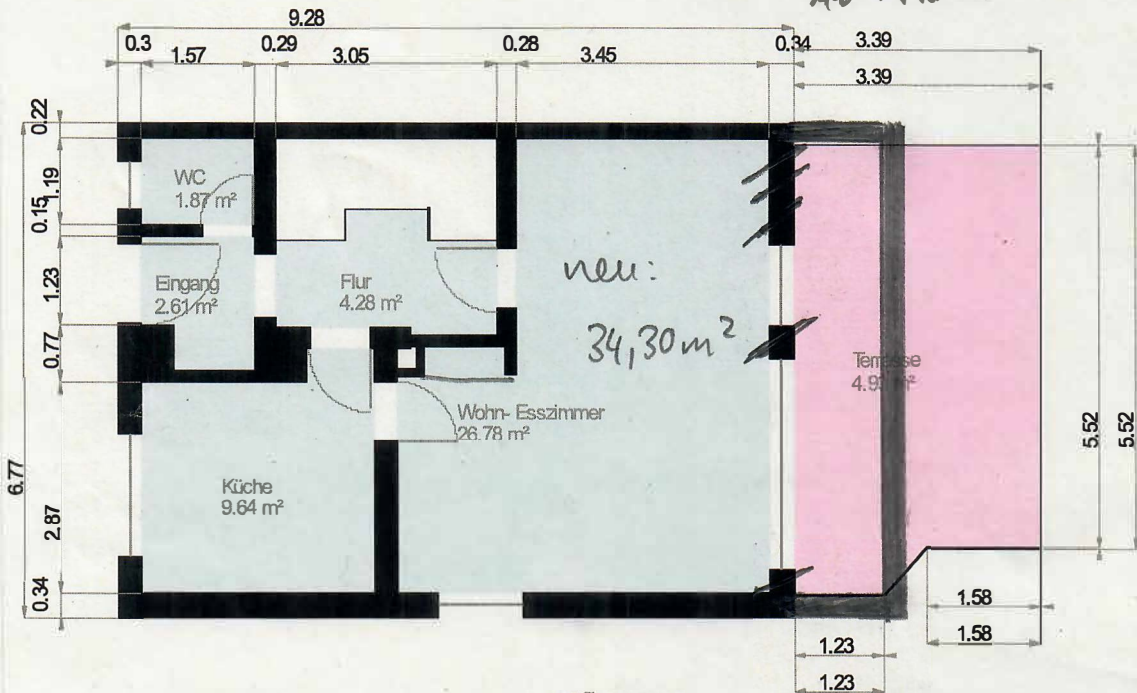
# Schnittdarstellung



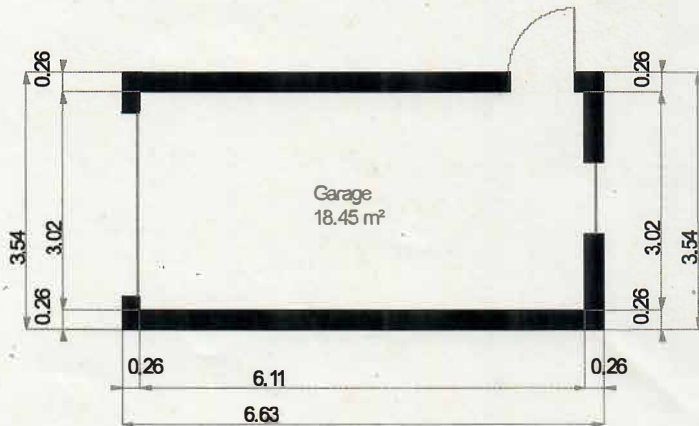
Maßstab 1 : 100  
0.0 0.5 1.0 1.5 2.0m

EG: Grundriss

neu: 7,52 m<sup>2</sup> EG  
 + 9,88 m<sup>2</sup> OG  
AG 145 m<sup>2</sup>



neu:  
 34,30 m<sup>2</sup>



$$5,34 \times 2,97 = 15,8238$$

$$1,10 \times 0,36 = 0,396$$

$$2 \times 34,68 \times 0,18 = 12,4848$$

$$4,68 \times 2,86 = 13,3848$$

$$= 34,30 \text{ m}^2$$

Maßstab 1: 100  
 0.0 0.5 1.0 1.5 2.0m

Wohnfläche 100%

Wohnfläche 50%

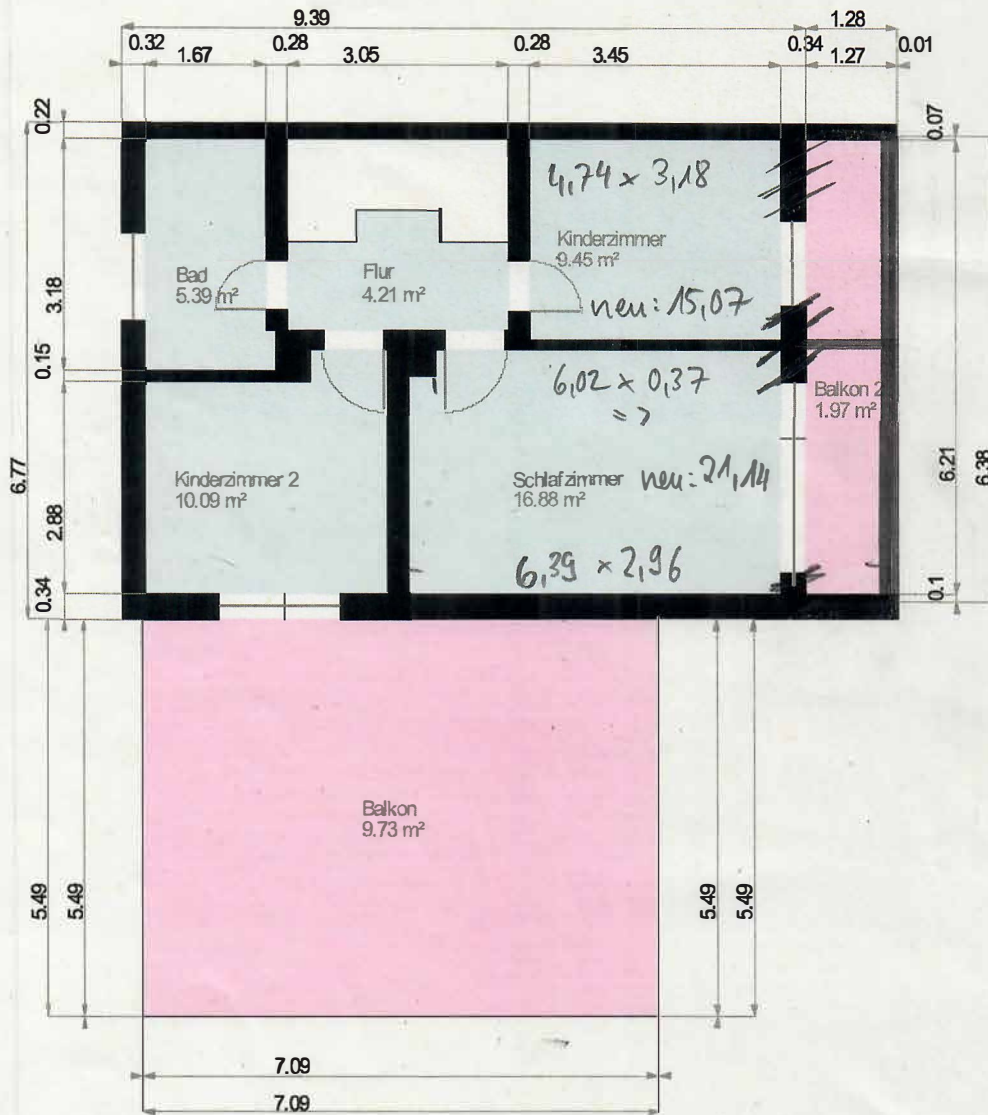
Wohnfläche 25%

OG: Grundriss

gesamt + 9,88 m<sup>2</sup> OG  
 + 7,52 m<sup>2</sup> EG  


---

 145 m<sup>2</sup>



Maßstab 1: 100  
 0.0 0.5 1.0 1.5 2.0m

Wohnfläche 100%

Wohnfläche 50%

Wohnfläche 25%